

Leupold DeltaPoint[®] Pro Quick Reference Card 1/2

Power on: Press and release power button

Power off: Press power button for more than 3 sec

Cycle through **8 illumination settings** using the power button. When highest or lowest setting is reached, the LED will flash 5 times. To change direction of adjustment, i.e., change from increasing intensity to decreasing intensity, press and hold the power button for 2 seconds and immediately release the button. Then continue pressing and releasing to change intensity.

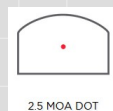
Motion Sensor Technology™: Sight goes to sleep mode after optic has been completely at rest for 5 minutes. On movement, system powers up to the last known setting.

Copyright © 2018 Leupold & Stevens, Inc. All rights reserved.

qrc_dpp_v4a.odg

RJJ 20210604

Leupold DeltaPoint[®] Pro Quick Reference Card 2/2



Battery is 3V Lithium battery (CR 2032).

Aiming point flashes 10 times when low battery power is detected.

Open the battery cover by pulling back the battery door release latch.

Insert battery positive side (+) facing up.

Windage and elevation screws move the point of impact 40 MOA (10" @ 25 yds) per revolution of the dial (1 MOA per click, max 60 MOA)

25 yds: 2.5 MOA=0.7" **10 yds:** 2.5 MOA=0.3"

Torque Optic Screws to 25 in-lbs.

Leupold CS: productspecialist@leupold.com www.leupold.com (503) 526-1400

Copyright © 2018 Leupold & Stevens, Inc. All rights reserved.

qrc_dpp_v4a.odg

RJJ 20210604